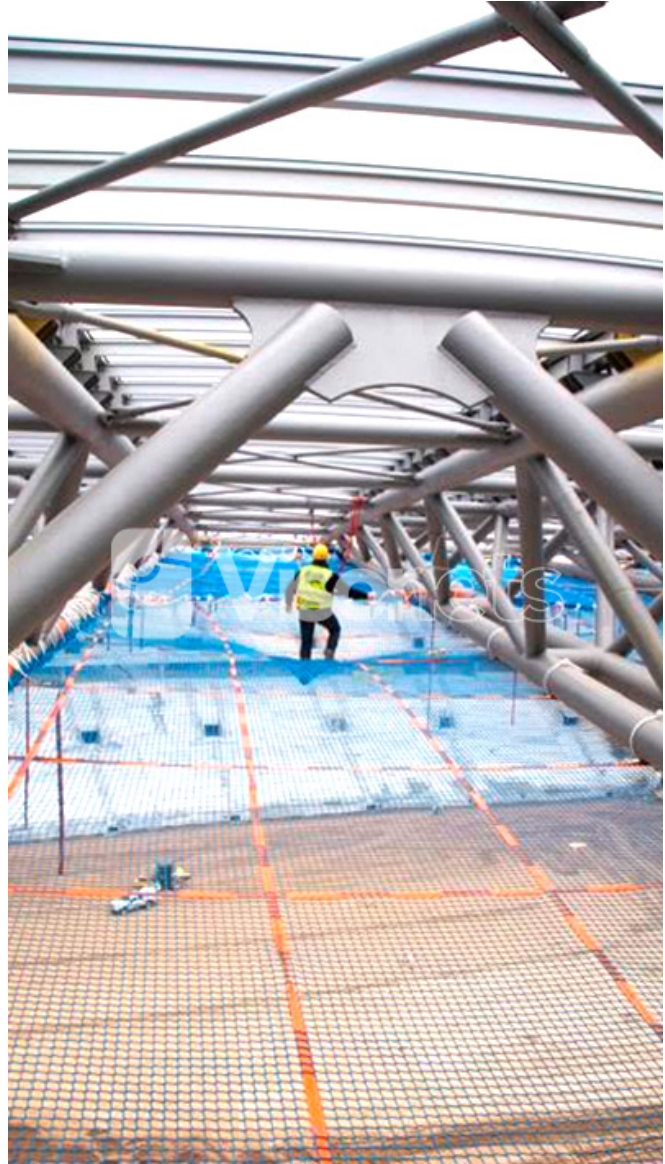


Arbeitsplattformen, früher bekannt als **Arbeitspositionierungsnetze** oder **begehbare Netze** haben sich zu einer sicheren und nützlichen alternativen Zugangsart entwickelt. TAP system is designed to reduce the deflection (sag) of the nets when in use with the aim of creating a stable working area.



Tensioned Access Platforms (TAP) - Working Platform Nets



Work Positioning Nets - Walk-on Nets

A platform network would basically consist of the assembly, anchoring and tensioning of safety nets of no more than 60 mm mesh, manufactured according to the EN-1263.1, by means of straps with ratchet and using these as a sort of transversal beams forming net

grids. The working height must be equal to or less than 1.5 m underneath the lower edge of the construction.

In combination with an adequate system of edge protection, it is a safe system for workers that can be combined with debris meshes and makes it possible to carry out work independently of the activities carried out at lower levels, being all this is the main reason for the rapid growth of the use of this system internationally.

Working platform nets provide a suitable and economic temporary walkable platform developed in lots of construction works, e.g.

- ✦ assembly, exchange, maintenance or inspection tasks of roof elements;
 - ✦ structural alterations, such as at a super market, where space saving solutions are required;
 - ✦ optimization of workflow at construction of industrial plants;
 - ✦ assembly, maintenance or inspection works in construction levels, which are hardly accessible in a conventional way and due to restrictions present on site, like it may occur at large-scale construction projects like stadiums, viaducts...
-

On the other hand, we must say that there is not yet an international standard although some organizations, such as the British FASET, have published their own usage guidelines and technical specifications helping contractors, suppliers and installers to know the main installation conditions, limitations of use and elements that make up this system.
